

CARBOSIX CONNECTORS

T-SLOTS

This galvanized steel internal joint connector is for connecting the CarboSix carbon fiber 45mm profile series with 8mm T-slots. The body is designed to prevent rotation of profile connection, and grips into profile end.



BRASS M8 THREADED INSERT

M8 threaded insert is for connecting the CarboSix carbon fiber connectors to the profile ends of the 45mm x 45mm profile series with 8mm T-slots. Insert allows M8 connectors to mount on to the profile ends.



13MM x 20MM NUT WITH M8 THREAD

A galvanized steel 13mm x 20mm rectangular nut for the CarboSix carbon fiber T-slot with a M8 thread. Rectangular T-slot nut with a M8 thread allows for connecting and mount of accessories.



45MM x 45MM TWO-EDGE CONNECTOR

Sandblasted aluminum two-edge connectors are for connecting the CarboSix carbon fiber 45mm x 45mm profile. The connector's two edges allow for a nested connection joint to a 45mm side of a carbon fiber pultrusion.



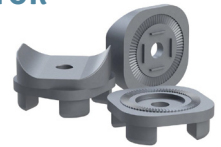
45MM x 45MM ONE-EDGE CONNECTOR

One-edge connectors are for connecting the CarboSix carbon fiber 45mm x 45mm profile. The connector's one edge allows for a nested connection joint to 45mm or 90mm side of a carbon fiber pultrusion.



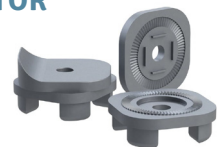
ADJUSTABLE ANGLE CONNECTOR

This sandblasted aluminum connector is for connecting the 45mm x 45mm profile at 5° increments. The connector's two edges allow for a nested connection joint to 45mm side of a carbon fiber pultrusion.



45MM x 45MM ONE-EDGE ADJUSTABLE ANGLE CONNECTOR

One-edge adjustable angle connector is for connecting the carbon fiber 45mm x 45mm profile at 5° increments. The connector's two edges allow for a nested connection joint to 45mm or 90mm side of a pultrusion.



45MM x 90MM TWO-EDGE VERTICAL CONNECTOR

Two-edge connectors are for connecting the CarboSix carbon fiber 45mm x 90mm profile in a vertical orientation. The connector's two edges allow for a nested connection joint to a 45mm side of a carbon fiber pultrusion.



45MM x 90MM ONE-EDGE VERTICAL CONNECTOR

One-edge connectors are for connecting the carbon fiber 45mm x 90mm profile in a vertical orientation. Its one edge allows for a nested connection joint to a 45mm or 90mm side of a carbon fiber pultrusion.



45MM x 90MM TWO-EDGE HORIZONTAL CONNECTOR

Two-edge connectors are for connecting the carbon fiber 45mm x 90mm profile in a horizontal orientation. The connector's two edges allow for a nested connection joint to a 90mm side of a carbon fiber pultrusion.

